

INTERACTIVE FLAT PANEL



FEATURES

- 4K UHD Display
- Heavy Duty 8 Core Processor with 8gb ram 128gb rom Powered by Android 14
- OPS Intel Core i7 8gb Ram 256gb Rom (Optional)
- Multi Touch upto 20 Points
- Rich Matt White Color Frame Body
- Double Side Anti Glare Glass
- Upto 4 Display Wireless Screen Sharing Featured
- Multi Language support
- Pre-built Business and Video Conferencing App
- HD 48 MP Camera with Auto Framing & Speaker Tracking
- 8 Array Microphone with Omnidirection , Echo Cancellation & Noise Reduction (Optional)



Infrared Touch



Anti Glare Glass



BYOD



Windows Link



OPS Slot



Zero Bonding



Android 14



Dual Module WiFi

BUILT IN OPERATING SYSTEM



Trend IFP comes with high spec built in operating systems having both Android & Windows for user to interact easily. Accessing android to windows is just on a single tap. Trend Flat Panels featured with pre built applications & with Google Play store for free access to applications.



TREND OS Android 14
octa core 8gb 128gb

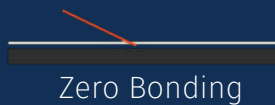


PC Module windows OPS plug in
i7 11th gen 8gb 256gb / 16gb 256gb

ZERO BONDING TOUCH SCREEN

Fully upgraded zero bonding technology guarantees 0-1mm air gap between LCD panel and glass, taking screen image quality to the higher level.

Air 0-1mm



INFRARED ULTRA FINE WRITING

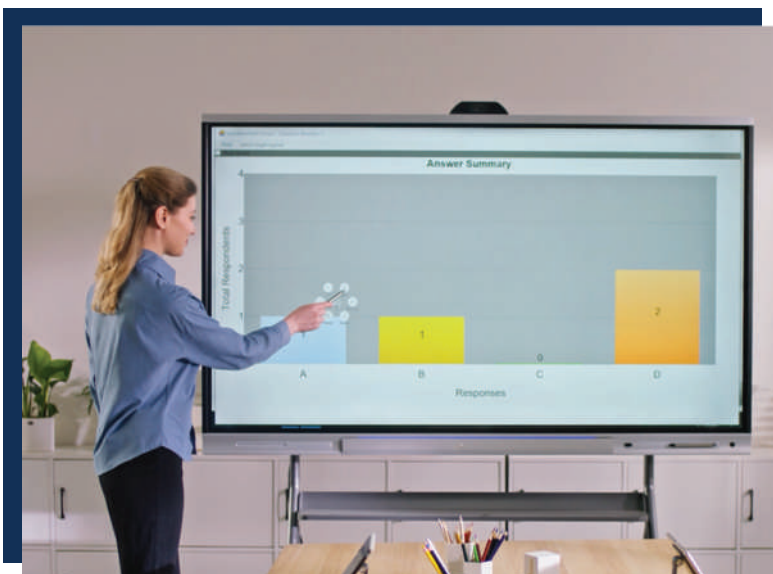
Infrared Ultra Fine (IUF) technology empowers the screen instant response and high precision, revitalizing more vivid and natural writing as pen-on-paper experience.



20- point touch

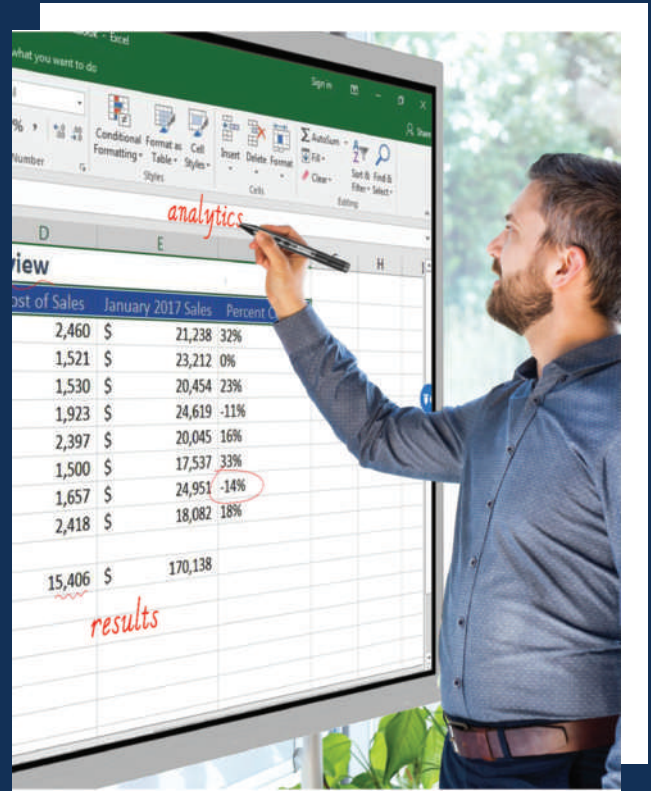


20- point writing

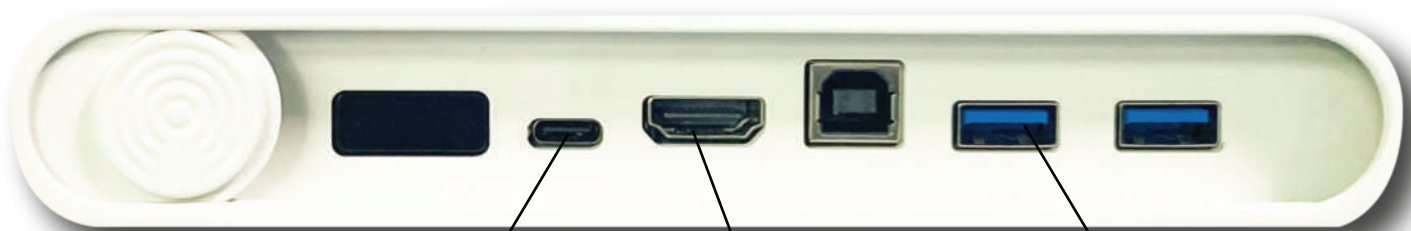


WINDOWS INKS COMPATIBLE

Support direct writing on MS Office documents, save annotations in the original file and share. With multi-functional collaborative Inks, you will never lose a thought.



INTERFACE



USB Type-C:
15W charging
Data/ audio/ video transmission
Data access to the IFP cam and mic
Reverse touch control for laptop/
cellphone screen casting

HDMI:
HDMI 2.0 Support 4k 60Hz

Public USB:
USB 3.0 available for use over
any source

UPGRADED VIDEO CONFERENCE

Integrating VC module, an instant remote meeting can be easily started.



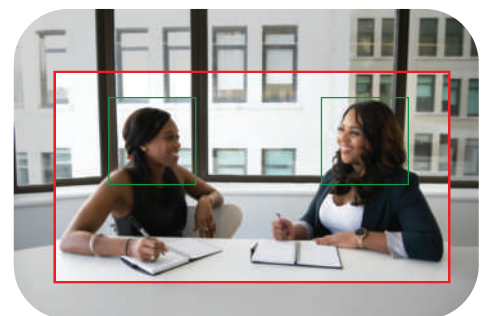
4K Camera



8 Mic Arrays



2*15W Speaker



Auto Framing



Speaker Tracking

PRODUCT SPECIFICATION

DISPLAY

Panel Size

65/75/86/98 inches

Aspect Ratio

16:9

Display Area

- 65 inches: 1429(H) * 804(V) mm
- 75 inches: 1652.5(H) * 930.5(V) mm
- 86 inches: 1897(H) * 1068(V) mm
- 98 inches: 2158.8(H) * 1214.3(V) mm

Resolution

3840(H)*2160(V) FULL UHD 4K

Pixel Pitch

- 65 inches: 0.372 * 0.372 mm
- 75 inches: 0.430 * 0.430 mm
- 86 inches: 0.4935 * 0.4935 mm
- 98 inches: 0.5622 * 0.5622 mm

Back Light Unit

DLED Straight Down Type

Response Time

8ms

Color Gamut

72% NTSC (Typ.)

Refreshing Frequency

60Hz

Display Color

1.07B(10bit)

Contrast Ratio (Typ)

4000:1

Viewing Angle

178° (H/V)

Brightness

400 cd/m²

Life Time

60000 Hours

TOUCH SYSTEM

Sensing Type

Infrared recognition

System Support

Windows10/Windows8/Windows7/Windows XP/
Android/Linux/Mac OS X/Chrome

Touch point

20 Touch Point

Minimum object size

Diameter ≥2mm

Inductive Object

Finger, Stylus and any other non-transparent objects

Response Time

< 7ms

Accuracy

±1mm (≥90% Touch area)

Touch Resolution

32768*32768

Interface

USB

Touch Drive

Free drive

Operating Life

More than 60,000,000 clicks

Surface Hardness

Toughened Anti Glare Glass with
Level 7H of Mohs Standard with
Anti-Fingerprint coating & Anti-Glare coating

ACCESSORIES

Standard Power Cord

1

USB Cable

1

HDMI Cable

1

Mount Bracket

1

Stylus Pen

1

Mobile Floor Stand

Optional

Operation Instructions

1

DISPLAY CONNECTORS

HDMI IN

1 front 2 back

PC- Audio IN

1

SPDIF

1

USB 2.0

2 front 1 back

USB 3.0

2

USB Touch Output

1 front 1 back

RJ45

2

RS232

1

Type C

1 (Optional)

NFC Reader

1 (Optional)

HDMI Output

1 (Optional)

VIDEO / AUDIO & NETWORK

Speaker Type

Built-in Speaker

Output Power

(8Ω 15W)*2 stereo

Networks

WiFi 6 (IEEE 802.11 ac/b/g/n/a/ax, 2.4GHz/5GHz)
/LAN

Camera & Microphone (optional)

4K 48mega pixel, Auto-framing , speaker tracking
with the perspective angle of 100 degrees,
8 array microphone with 0-8 meter pickup
distance, support 3D noise reduction Echo
cancellation.

PRODUCT SPECIFICATION

POWER

Power Requirements

100-240V AC 50/60Hz

Overall Power

- 65 inches: 280W
- 75 inches: 320W
- 86 inches: 380W
- 98 inches: 400W

Standby Power

≤0.5W

PART NUMBERS

65" Flat Panel

TR-FPV65T82

75" Flat Panel

TR-FPV75T82

86" Flat Panel

TR-FPV86T82

98" Flat Panel

TR-FPV98T82

ENVIRONMENTAL CONDITIONS

Operation Temperature

-10°C -50°C @ 10%-90%

Operation Humidity

10% - 90% RH

Storage Temperature

-20°C -60°C @ 10%-90%

Storage Humidity

-20°C -60°C RH

Altitude

Below 5000 meters

PRODUCT DIMENSIONS

- 65 Inches: 1485*917.7*91.8 mm
- 75 Inches: 1707.4*1042.9*91.8 mm
- 86 Inches: 1953.6*1181.7*91.8 mm
- 98 Inches: 2216.8*1317.3*108.7mm

WEIGHT N.W G.W

- | | | |
|--------------|---------|---------|
| - 65 Inches: | 37.5 Kg | 44.4 Kg |
| - 75 Inches: | 53.3 Kg | 71 Kg |
| - 86 Inches: | 73 Kg | 88.4 Kg |
| - 98 Inches: | 98 Kg | 121 Kg |

BUILT IN ANDROID

System Version

Android 14 / higher

CPU

Quad-Core A55 1.5GHz Mali G53*MP2
8 core processor 311 (optional)

Memory

8GB

Storage

128GB

PC OPS (Optional)

Core i5/i7 4G 256 HD Windows 10 Optional

PACKING DIMENSIONS

- 65 Inches: 170*23*107 cm
- 75 Inches: 186*28*115 cm
- 86 Inches: 216*28*134 cm
- 98 Inches: 236*28*146 cm



Stepwell Smart Solutions (SSS) is the creator of TREND interactive technology that helps the world Interact and share content. The company's products are utilized by organizations of all sizes, with multiple users across Globe. For more information on Stepwell please visit

www.stepwellsmart solutions.com



www.trendworld.io